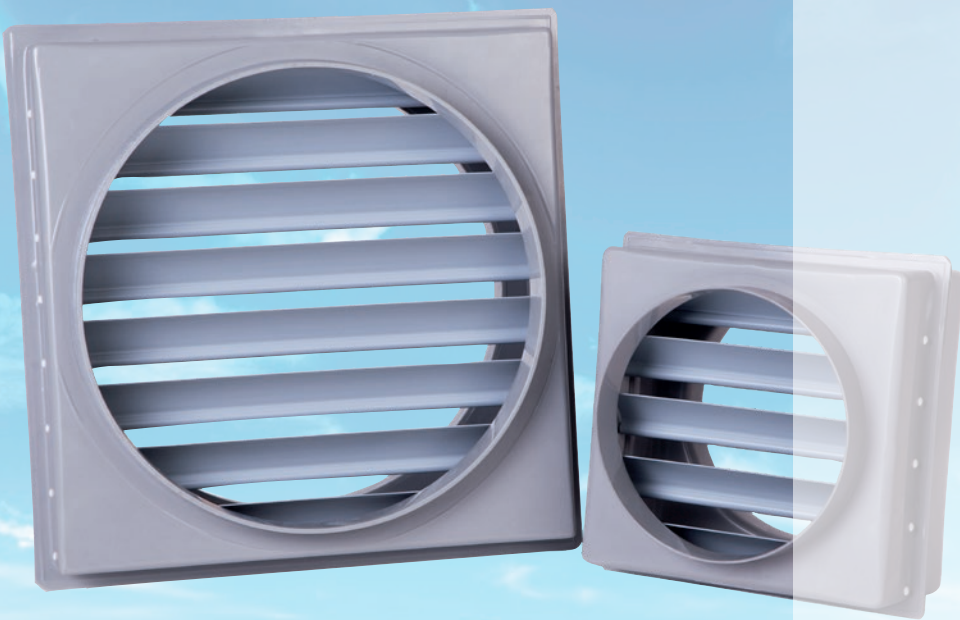


## Automatic louver damper



Type  
HF - JKS 1

Automatic louver damper with sleeve connection on both sides for HF - roof fans



### Advantages

- Made of chemically resistant plastics
- Ideal for use in aggressive exhaust air
- Prevents heat losses and contamination of laboratory equipment at low cost

### Application

- Use in conjunction with exhaust air fans in the laboratory to avoid undesirable air flows when the fan is at a standstill.

### Conditions of use

- Max. air velocity should not exceed 10 m/s
- Operating temperature: 0 °C to + 40 °C
- Recommended inflow route:  
1 x = connection diameter in order to prevent unfavourable flow velocities and associated pressure losses

### Design

- Nominal connection sizes from 110 to 500 mm
- Installation position vertically in the line
- Standard connection with round sleeves for direct welding
- Blade area square
- Blades made of rigid PVC cavity-type profiles and with free-floating mounting in the housing
- Housing made as standard from PPs material, other materials optionally available

### Specification

HF - louver damper

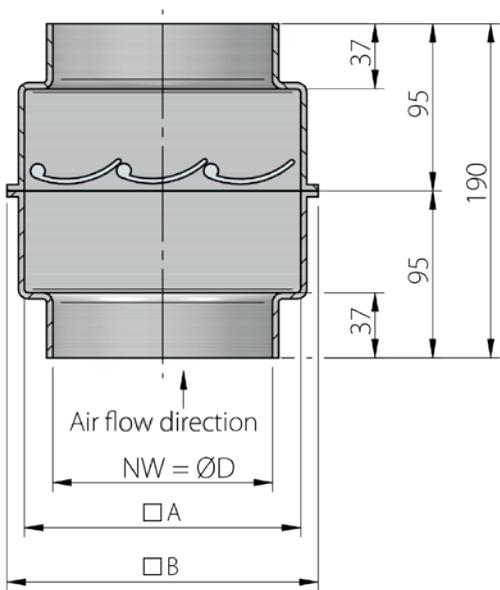
Automatic louver damper made of chemically resistant plastics, flap housing with square blade area and round sleeve connections for direct welding / bonding into the pipe, dimensionally stable blades made of PVC cavity-type profiles with free-floating mounting in the housing.

All components coming into contact with the exhaust air medium are made of chemically resistant plastics.

Brand	: Hürner Luft- und Umwelttechnik	
Type	: HF - JKS1	
Connection diameter	: ...	mm
Housing material	: PPs	
Blade material	: PVC	
Connection	: Sleeve connection	
Installation position	: vertical	



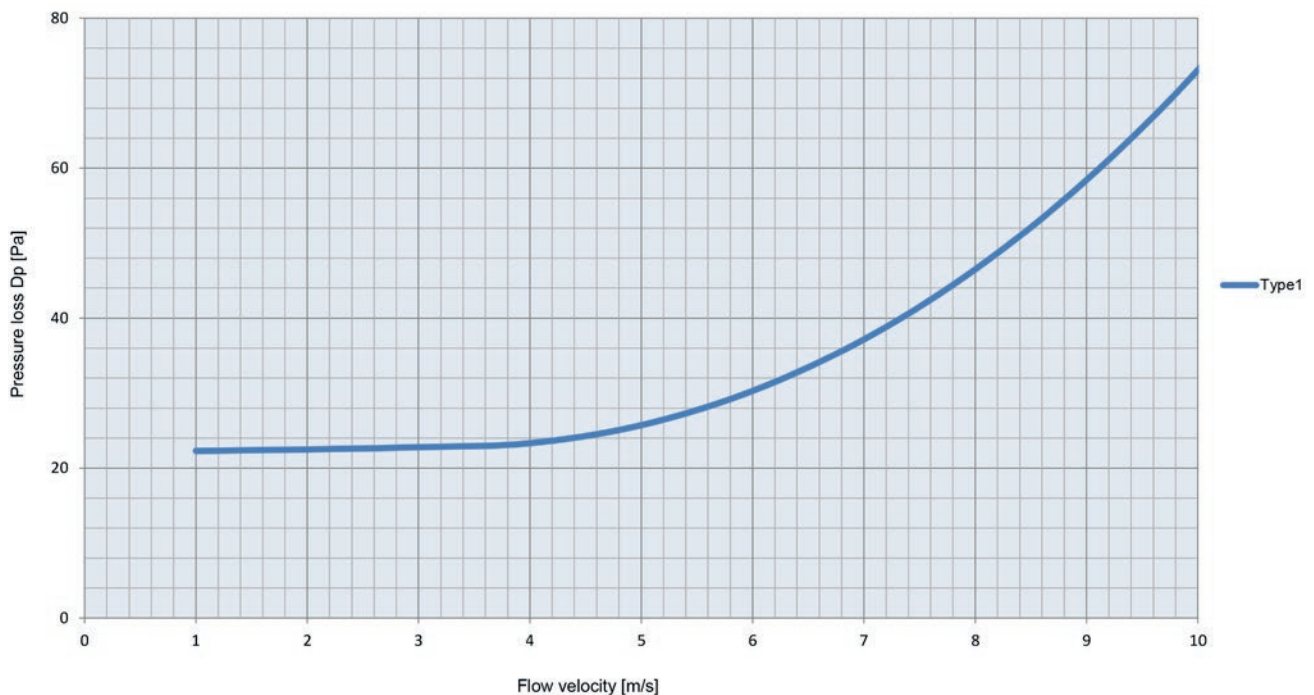
Automatic louver damper with sleeve connection on both sides for HF - roof fans



Size Ø	Dimension [mm]		PPs Housing
	A	B	Article no.
110	157	177	407-015-007000
160	207	227	407-015-010000
200	247	267	407-015-011000
250	250	270	407-015-012000
315	357	385	407-015-013000
355	405	435	407-015-014000
400	405	435	407-015-015000
500	560	590	407-015-016000

Other versions are optionally available.

## Pressure loss characteristic



[www.plasticagroup.co.uk](http://www.plasticagroup.co.uk)

Tel.: +44 (0) 1564 432 112 | [info@plastica.tech](mailto:info@plastica.tech)

Plastica Technologies  
Unit 2, Shaw Park Business Village,  
Shaw Road,  
Wolverhampton,  
WV10 9LE,  
UK